

FENDT

Fendt Cargo front loader





Fendt CargoProfi. The new generation of front loaders.

Fendt offers the intelligent Cargo and CargoProfi front loaders for the 300, 500 and 700 Vario series. For the first time, crop can be weighed cleanly and operating ranges defined with lifting height and tilt angle. An intelligent sensor system is also integrated into the swing arm; this is adjustable and accessible from the comfort of the Varioterminal. The Fendt CargoProfi therefore provides the optimal settings for safe and precise loading.



Fendt Cargo. Unbeatable in combination.

The Fendt Cargo front loader offers advanced technology for maximum productivity. As a universal, perfectly tailored implement, it's the ideal partner for Vario tractors. All models are equipped with the unique Cargo Lock coupling system and parallel guidance with Z-kinematics.

FENDT CARGOPROFI

Intelligent and precise loading.

The intelligent CargoProfi

The new Fendt CargoProfi, available for the front loader model 4X/75, 4X/80, 5X/85 and 5X/90, is the product of continuous development of the tractor and front loader unit. The front loader has a measuring and tilt sensor, and a job computer to record and process a range of data and settings. The settings are easy to adjust and view in the Varioterminal.

Adjustable with a pre-set facility:

Lifting height and tilt angle

The functions on the CargoProfi make work easier thanks to intelligent presettings. The operator can therefore limit the lifting height and tilt angle, and pre-set them in the memory. This is a decisive safety factor in low buildings or when loading very high trailers. With the memo function, arm and attachment positions can be saved for frequently used sequences and called up again when required.

Shake function and end position damping

The CargoProfi has a fast and effective shake function to ensure that all firmly packed material is dumped completely from the bucket. And for loose material, losses caused by trickling are minimised through the end position damping. The flow volume of the hydraulics is automatically reduced when approaching the highest or lowest position and the front loader reaches these without jerking.

Load precise target weights thanks to the weighing function

The unique weighing function of the CargoProfi enables recording loads as individual and total weight. You have full control over the loaded quantity and total weight of the transport vehicle, which means you can make full use of the loading volume. The button-activated weighing function is also fully integrated in the operating concept of the Fendt Vario. The information, including counter and target weight function, can always be viewed on the Varioterminal, so enabling precise loading.

It couldn't be easier to make CargoProfi settings on the Varioterminal: Show the crossgate lever function, view single weight and overall weight data from the weighing system, limit the working range for the swing arm and attachment.



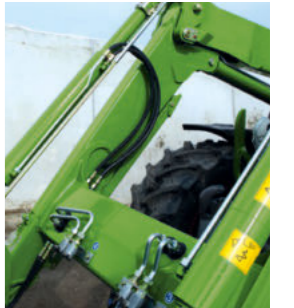
The Varioterminal and job computer on the front loader are connected via the CargoProfi socket.



The sensors for the Cargo Profi functions are located on the right side of the front loader, where they are well protected.



Two pressure sensors in the crossbeam enable the weighing function of the CargoProfi.



Loader work, safe, easy and convenient

There are undeniable advantages out on the field. Limit the tipping angle, for example, when loading very high trailers. End position damping ensures the front loader is raised gently and smoothly, which minimises loss of material through trickling. The Memo function is especially practical for repeating sequences, for example, the horizontal lower position can be targeted automatically. The weighing function gives you full control over the load weight.

FENDT CARGOPROFI

More gentle and efficient material handling.

Variable damping – easy to adjust from the terminal
Easily transport and load even the most delicate goods with speed-dependent damping. To set the right cushioning level for the job at hand, you can individually adjust the applicable speed range.

Store the ideal setting using the memory function
Get recurring jobs done quickly and easily with the Fendt CargoProfi built-in memo function. With the Memo function, you can store common front-loader swing arm and attachment positions at the touch of a button, to go back them again and again. For example, you can guide the buckets exactly parallel to the floor when loading bulk goods.

Safe, easy and convenient
There are undeniable advantages out on the field. Limit the tipping angle, for example, when loading very high trailers, so that the side panels of the trailer are not damaged. End position damping ensures the front loader is raised gently and smoothly, which minimises loss of material through trickling. The weighing function gives you more control over the load weight.



Fully integrated into the Variotronic:
The settings for the CargoProfi are adjusted easily and intuitively with the Varioterminal.

The front window opens out all the way, even with the front loader swing arm fully extended. Choose the right cab variant in the series.



THE FINEST OPERATING AND RIDE COMFORT

Why Fendt operators have a far better view.



Exceptional, unbroken views with a 77° viewing angle.

Perfect overview with the Fendt VisioPlus cab

During loader work, it is essential that you have a good view of everything. The Fendt Vario tractors in the 300, 500, and 700 series stand out from the crowd thanks to an outstanding, all-round clear view with a 77° viewing angle from top to bottom – a miracle of vision and space. The windscreen on the cab curves up into the roof for an unobstructed view over the raised front loader. The integrated curvature means any material just slides off and offers the ultimate in visibility.

Optimal visibility thanks to the low, streamlined bonnet design

The area between and in front of the wheel arches has also been optimised. Fendt tractor bonnets are always streamlined and well-designed – especially useful for shunting grain for example. Fendt offers a fully integrated roof window for the compact 200 Vario series to guarantee an excellent view of the raised front loader.

Smart design for the best view

Through the optimised arm width and the crossbeam, which is positioned very far forward, the entire structure of the front loader has been designed for an unobstructed view. The pipelines lie protected in the arm and ensure a better view. If you like to have the front window open, the mounting points of the front loader arm and the Z-bar linkage mean the front window can be swung out fully at any time during front loader work (not available on the 3X/65 and 4X/75 compact).

A gentle ride thanks to the damping system

The damping system, which lies completely protected in the cross beam, provides exceptional comfort. Nitrogen accumulators on the front loader act as shock absorbers. Shock loads cause the hydraulic oil to press against a membrane in the accumulators. This compresses the gas volume, which reliably reduces peak loads. If precise implement control is required, the system can be switched off electrically, with a quick push of a button in the cab (mechanical for 3X arm).

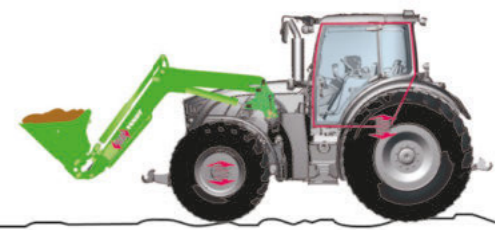
Front loader without damping system:

Shock loads are transmitted to the tractor.



Front loader with damping system:

Gas pressure reservoirs act as shock absorbers and prevent vibrations from being transmitted to the tractor body. The built-in cushioning system, together with front axle suspension and cab suspension, ensures superior ride comfort (optional).



The tractor's uniquely curved windscreen always gives you a perfect view of fully extended implements. At the same time, its curvature prevents material from building up on the windscreen and keeps the view completely clear.



The roof window, which is standard on the 200 Vario, provides a perfect view of the raised front loader.

THE FINEST OPERATING AND RIDE COMFORT

Maximum comfort for better results.



Sensitive and precise: Control via the standard crossgate lever
 You will be thrilled by how easy the front loader is to operate, because it is perfectly integrated in the Fendt Vario. Two control valves can be controlled very precisely with the standard crossgate lever without having to reposition your hand.

Cargo - comfort handling for the 3rd and 4th circuit
 Complex implement functions can be controlled with the optional third and fourth hydraulic circuits. These are controlled by pushbuttons on the crossgate lever. The optional hydraulic attachment lock and the vibration damping system (optional) can also be conveniently operated from the operator's seat using the Cargo comfort controls.

Perfection: Turn and steer on the left, and load on the right
 The rapid reverse function on your Vario allows you to change driving direction quickly and easily, without wear. When driving in pedal mode with TMS, both of your hands are free, allowing you to change travel direction with your left hand and control the Cargo with your right. No more need to change hands. The integrated Stop-and-Go function is an additional benefit. This allows you to steer and stop the vehicle precisely when turning.

VarioActive steering – reverse in just one action
 Steer quicker with the VarioActive steering system. With activated VarioActive steering, the number of steering wheel turns from full lock to full lock is halved. Using the superimposed VarioActive steering system, a greater steering ratio can be activated by the touch of a button. It adapts to the steering movement and road speed, resulting in enhanced operating comfort, especially for front loader work in small farmyards or on headlands.

With the crossgate lever installed as standard, the front loader can be controlled extremely sensitively with two control valves. When working with the silo or ball pliers, use the push-buttons on the crossgate lever to control the third and fourth hydraulic circuits (optional on request).

With the Cargo comfort controls, the third control circuit can be switched over to the hydraulic attachment lock and the fourth control circuit to the optional damping system.

With the orange reverser lever, you can easily change directions with your left hand. Hold the lever down and the Vario stops. Release the lever and the tractor automatically drives in the preset direction.

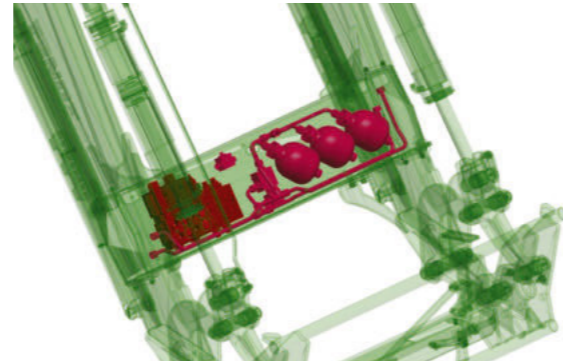
The arrangement of the controls ensures the best ergonomics. The Varioterminal gives you a clear overview of all control displays.



At the headland or during front loading work, you benefit from VarioActive steering, reaching a full wheel turn with just one steering wheel rotation. Up to 8 km/h the superimposed steering system is unrestricted, from 8 to 18km/h the superimposition effect is linear.

200 Vario: The electric crossgate lever (optional) controls the front loader with extreme precision. The 3rd and 4th control circuit can be operated without changing hands by using the push buttons on the crossgate lever.

Perfectly tailored to your Vario.



All hydraulic components are fitted in the cross beam and are therefore fully protected from dirt and mechanical damage.

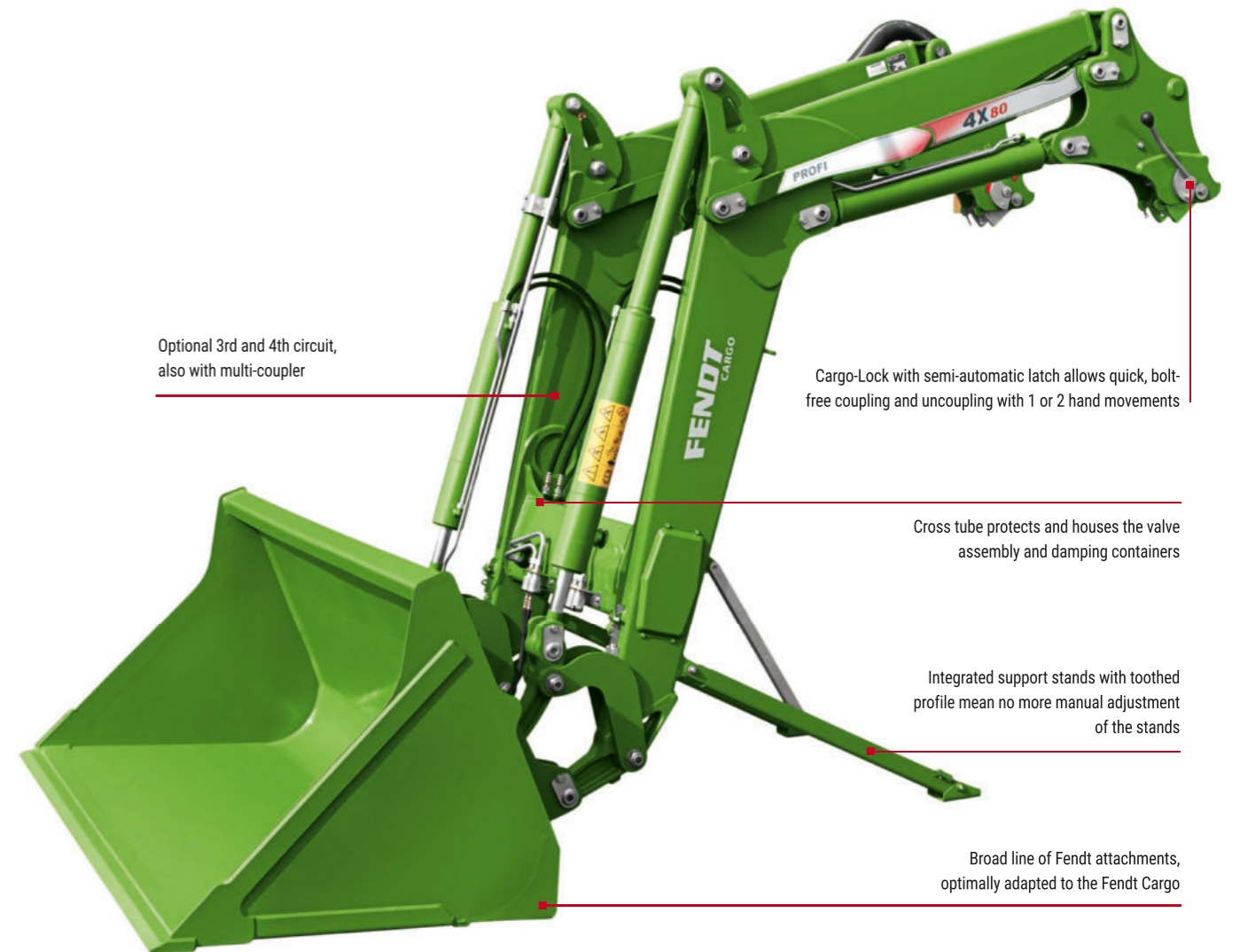


A fusion of quality and practicality

The basic prerequisite for all Fendt developments is the highest quality. A major objective during the development of the Cargo was to form a perfect unit from the tractor series and front loader. The technical specifications and overall design of the tractor and front loader have been perfectly adapted to each other.

Z-kinematics for perfect parallel guidance

Further proof that the front loader is perfectly adapted to all the Vario tractors is the tried and tested mechanical self-levelling function on the Cargo, in the form of Z-bar linkage, ensuring perfect visibility. The parallel guidance ensures that attachments are kept in the same position over the entire lifting height. You can monitor its position at all times with the tilt indicator (1).



Optional 3rd and 4th circuit, also with multi-coupler

Cargo-Lock with semi-automatic latch allows quick, bolt-free coupling and uncoupling with 1 or 2 hand movements

Cross tube protects and houses the valve assembly and damping containers

Integrated support stands with toothed profile mean no more manual adjustment of the stands

Broad line of Fendt attachments, optimally adapted to the Fendt Cargo

Life-time design for a long service life

High-grade materials ensure durability for a long service life. High-strength fine-grain steel is the key factor behind the lifetime design of the new Fendt Cargo. In addition to high stability, it also guarantees a low weight. The Fendt profile, which is welded in one continuous seam, ensures high stability and therefore a long service life. The generously sized bronze bearing points with lubrication also guarantee a long service life and minimum wear.

Mounting and removing made easy.



The new Fendt Cargo-Lock makes mounting and removing the loader easy and fast. The multi-coupler also saves time. It means you can connect all electric and hydraulic lines with just one hand movement.



The self-adjusting parking supports are mounted neatly on the arm.



Fendt Cargo-Lock guarantees quick and easy mounting and removal. A multi-coupler connects all hydraulic and electric lines at once – even under pressure on the front loader side.



The implement is conveniently unlocked using a lever (1) on the quick-attach frame; it just takes a flick of the hand. When mounting an attachment, lock it automatically by tipping it back completely.

Technology for fast mounting and removing

The new Fendt Cargo-Lock latch makes mounting and removing the loader quick and easy. The multi-coupler also saves time. It means you can connect all electric and hydraulic lines with just one hand movement.

Locking is really easy with Cargo-Lock

Cargo-Lock with semi-automatic latch allows quick, bolt-free coupling and uncoupling with 1 or 2 hand movements, meaning that the often awkward task of inserting locking pins is no longer necessary, making mounting and removing much quicker. Indicators on the inside of the loader towers tell the operator the status of the locking system at all times from the cab.

Ingenious multi-coupler

Just one hand movement is all it takes to connect the hydraulic and electric lines. With the standard-equipped multi-coupler, incorrectly connected hoses, oil contamination and high leakage losses are a thing of the past. Disconnecting is just as neat and easy. Even when there is excess pressure in the loader after standing out in the sun, the Cargo can be coupled without problems.

Perfect stand

The parking supports have been completely redesigned. Manual setting and adjusting is not necessary, which saves valuable working time. Bolts or cotter pins no longer need to be inserted. The self-adjusting parking supports are mounted compactly on the arm.

Quick and easy maintenance.



Maintenance even when the front loader is hitched
Since the designs of the front loader and the tractor have been specially adapted to each other from the very beginning, all maintenance work can be performed while the front loader is mounted. This gives you easy access to the oil dipstick to check the oil for example. The front loader was designed to guarantee a very long service life through simple maintenance and the use of the best materials.

Highly robust and resistant
Torsion resistance and durability played an important role when developing the Fendt Cargo. The bearing points are large and extremely robust.

The large-sized bearing points ensure play-free connections, durability and a minimum of wear. The bushes are made of high-grade bronze bearing material and have lubrication pockets.



The front loader mounting parts have been designed specifically for Vario tractors, so you can access all the maintenance points even with an attached front loader. For example, access to the oil dipstick was taken into account when designing the mounting brackets.



Wheel weights are available for optimum rear ballasting. They are mounted with the tried and proven Fendt coupling system.

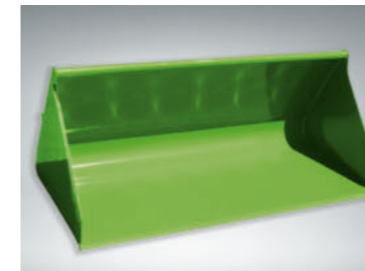


Universal weights round off the ballasting system and stability against overturning perfectly.



Flexible ballasting
Fendt offers you a comprehensive ballasting concept for frequent loader work. Depending on the application, you can use wheel weights or rear weights, which are fast and easy to mount and remove. This keeps your Fendt Vario well balanced and stable in any situation.

Fendt through and through.



The light material bucket is available in widths of 2100 mm (1.27 m³ flush volume) and 2400 mm (1.45 m³ flush volume). The bucket is powder-coated instead of lacquered and the blade is made from durable, low-wear Hardox 500.



The universal bucket is available in four sizes: 1600 mm wide (0.538m³ flush volume), 1850 mm wide (0.622 m³ flush volume), 2100 mm wide (0.706m³ flush volume) and 2400 mm wide (0.807m³ flush volume).



The silage grabber comes in two sizes: 1800 mm wide (1.00 m³ flush volume) and 2200 mm (1.25 m³ flush volume).

The bale grab is designed for bales with an outer diameter ranging from 900 mm to 1900 mm.



The big bale fork has three tines and is 1500 mm wide.



The pallet fork is suitable for loads up to 2000 kg, while the tine length is 1100 mm.



Semi-automatic attachment lock
The attachment is conveniently unlocked using a lever on the quick-attach frame; it just takes a flick of the hand. When mounting an attachment, lock it automatically by tipping it back completely.

Hydraulic implement lock
Using a push button in the cab, the operator can lock and unlock the tool hydraulically so that the frequent tool changes can be performed quickly and from the convenience of the cab. The two lock indicators enable the operator to check whether the tool is locked on both sides (not for 3X swing arm).

The heavy material bucket is available in widths of 1600 mm (0.53 m³ flush volume) and 2000 mm (0.67 m³ flush volume). The bucket trough is rounded and smooth to prevent crop from sticking. The blades are made from hardened, low-wear high carbon steel and are 150 x 20 mm. They also include industrial loader tines which are bolted flush onto the underside of the blades, therefore preventing grooves during levelling.





FENDT SERVICES

The best product with the best care and service.

With Fendt, you get a cutting edge product that will overcome the toughest of challenges. That's why you can expect that little bit extra when it comes to services from highly-efficient, certified Fendt dealers:

- Fast lines of communication between you and our trained service team.
- 24/7 availability of replacement parts throughout the season
- 12-month warranty on Fendt original parts and their fitting

100% quality. 100% service: Fendt Services
We offer outstanding services to offer you the best possible reliability of use and efficiency from your Fendt Machine:

- Fendt Demo service
- Fendt Expert operator training
- AGCO Finance – finance and lease deals
- Fendt Care – servicing and guarantee extensions
- Fendt Certified - Pre-owned machine programme



+44 330 123 9909

Your Fendt dealers are always there when you need them, and have just one aim – to make sure your Fendt machines are ready for action at any time. If something does go wrong during harvest time, simply call your certified service centre 24/7 on the emergency hotline.

FENDT SERVICES

Rest assured that your machine will be ready for action tomorrow.

Fendt Demo service

Is this a new purchase? You'll love our Fendt solutions and overall efficiency. Let the Fendt Demo service make the decision easier.

Fendt Expert operator training

We help you get the most out of your vehicle. With the help of our exclusive Fendt Expert operator training programme, you can optimise the efficiency of your Fendt even further, and get to know all the functions to make your daily routine that much easier. Our team of professional trainers will advise you on how to use your Fendt machine to its full potential.

Individual finance and lease models

Investing in technology means a considerable capital outlay. A credit finance agreement from AGCO Finance offers attractive conditions and flexible terms. From the initial down payment to monthly instalments to the payment term – you set the general terms on which to finance your Fendt. If you need additional resources in a hurry or want to use tractors over a long-term period without purchasing them, your Fendt dealer can offer the ideal solution with tailored lease packages.

Fendt Care warranty extension – Performance and cost-effectiveness up to 8 years / 8,000 operating hours under contract

Fendt Care Services combine high operational and planning reliability, cost control and the best value retention. The packages cover all specified maintenance work, based on attractive fixed rates. The various Fendt Care levels include regular maintenance and servicing combined with a flexible extended warranty for up to 8,000 total operating hours or 8 years in total. From a Bronze service agreement to the Platinum carefree package including replacement machine, Fendt has a flexible and tailored solution for your fleet.

Fendt Certified - Pre-owned machine programme

Leaders drive Fendt – including with pre-loved agricultural machinery. Used agricultural machinery to tried and tested high-quality standards and certified Fendt quality – the ideal solution for cost-conscious farmers or as an addition to a growing fleet. The benefits:

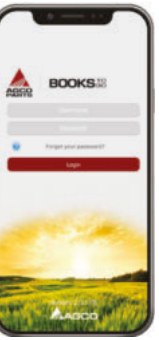
- Certification according to strict quality standards
- Extensive incoming check (technology, wear, appearance)
- Fully serviced wear parts
- If required, replace, clean and paint components
- One-year warranty (option to extend)



8 years / 8,000 operating hours

With its flexible Care warranty extension, Fendt offers particularly long policy periods of up to 8 years or 8,000 operating hours. Another benefit is the transferability in the event of reselling the machine and the possibility of renewal. This ensures operational reliability, minimises the cost risk of repairs and gives you a value-retaining used machine.

Using the smartphone app "AGCO Parts Books to go", you can find Fendt spare parts quickly and easily and order them directly. The app is available for download in the app store and in the Google Play Store. Your personal access data is available from your Fendt dealer.



Full control over costs and planning reliability

Fendt Care	Bronze	Silver			Gold ¹	Platinum ¹
Service	Regular maintenance, fixed maintenance costs	Cover against repair risk (excludes wear)			All costs covered (except wear and tear)	Costs and availability covered (except wear and tear)
Benefits	Reliability of use	Coverage against major damage	Full coverage under great conditions	Full protection while you keep costs under control	Protect against all unexpected repair risks including all secondary costs	For customers who can't afford to down tools
Regular maintenance	✓	✓	✓	✓	✓	✓
Repair costs		✓	✓	✓	✓	✓
Excess		€490	€190	€0	€0	€0
Travel costs, recovery/towing, troubleshooting with added diagnostics tools, performance testing, oils and filters, if engine/gearbox is repaired					✓	✓
After hours and weekend surcharge						✓
Replacement machine						✓

¹ Valid for UK, Germany and France. Platinum only available at participating dealers.



Equipment variants and technical details.

Dear customer,
Our motivation at Fendt is to provide you with the most innovative machines and solutions so that you can do your work even more efficiently and comfortably. We are constantly advancing our products and their equipment details. Therefore, you will find all technical data and equipment variants updated daily on our website.



Simply scan the QR code or follow the link below:
fendt.com/cargo-data

FENDT

Leaders drive Fendt.



www.fendt.com

AGCO GmbH – Fendt Marketing
87616 Marktoberdorf, Germany

EN/1901



Fendt is a worldwide brand of AGCO.

All details regarding scope of delivery, appearance, performance, dimensions and weights, fuel consumption and running costs of vehicles reflect the latest information available at the time of print. These may change by the time of purchase. Your Fendt dealer will be happy to inform you about any changes. The vehicles shown do not feature country-specific equipment.